

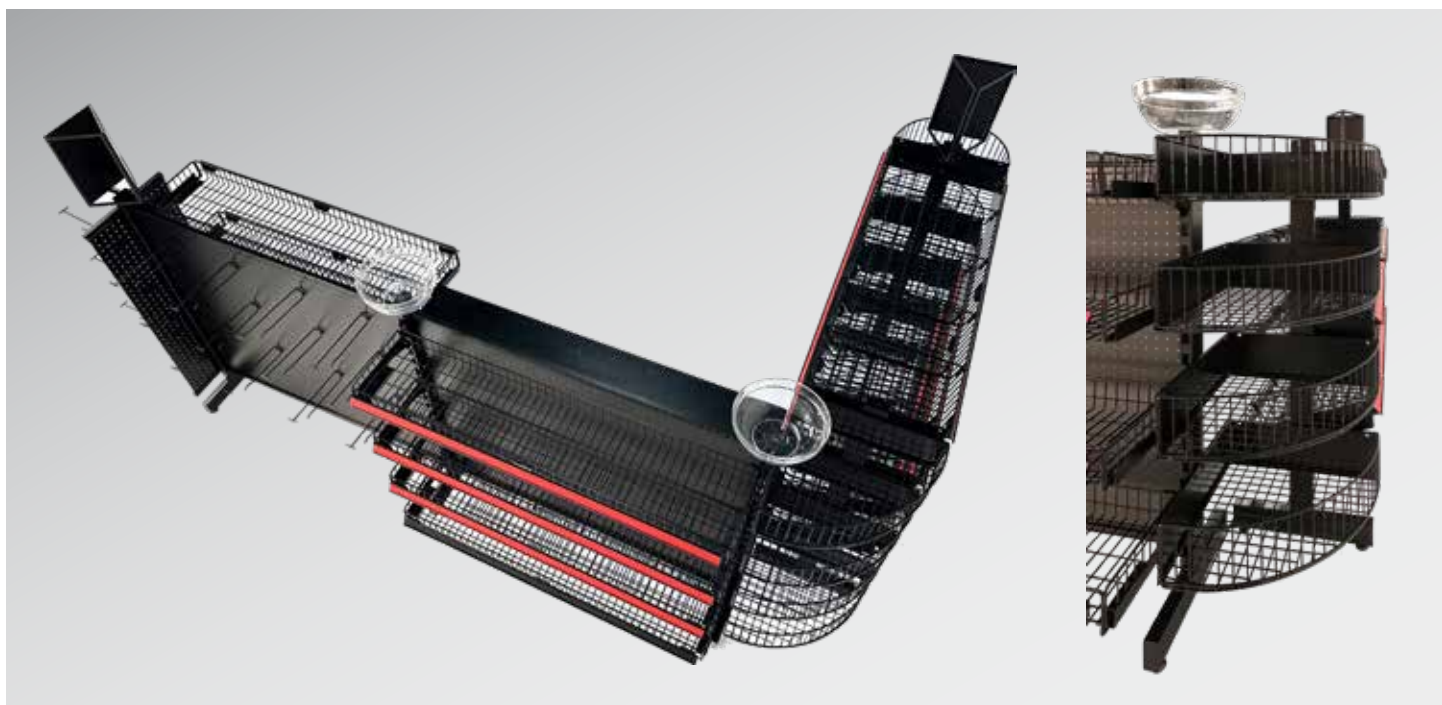
The Shoppable Impulse Checkout Display

Capture Added Value from Impulse Purchases

Missing out on impulse purchases is missing out on sales. The average consumer makes nearly 10 impulse purchases per month, and some age groups report making nearly half of all purchases on impulse. Planniq Queue™ is your strategic checkout lane management solution. It offers myriad configuration options and a variety of elements to create your own custom retail displays to turn wait times into more shopping time. All while improving the shopper experience.

Planniq Queue Key Product Uses:

- Snacks
- Bagged Candy
- Novelties
- Bakery
- Fruit
- Seasonal



Planniq Queue™ Key Product Features:

- Maximizes impulse purchases in high-traffic areas
- Fits a range of store uses including:
 - cash lane management
 - shopping lane dividers
 - perimeter wall fixtures
 - traffic flow configurations
- Supports a mix of baskets, shelves, pegboards and hooks
- Allows for on-demand fixture mobility and flexibility
- Features diverse and durable product displays
- Showcases products via either single- or dual-sided configuration
- Creates a clean, accessible shopping environment
- Delivers a highly organized, space-saving and flexible design
- Engages customers through promotional sign-holders

Planniq Queue™ Sizes & Specifications:

- Set of (5) 43" uprights
- Set of (4) 4' X 9" lined baskets with four dividers
- Set of (2) 4' pegboards with hooks
- Set of (4) rounded, lined quarter corner baskets
- Set of (4) rounded, lined half-moon baskets
- Includes endcap, promotional sign holder and two candy bowls
- Estimated lead time of 2-3 weeks for in-stock items; or
- Estimated lead time of 12-14 weeks for non-stock items