

*Introducing...*



V A S T

Excellence on Display 

IMAGEWORKS  
DISPLAY



Versatile • Advanced • Scalable • Technology

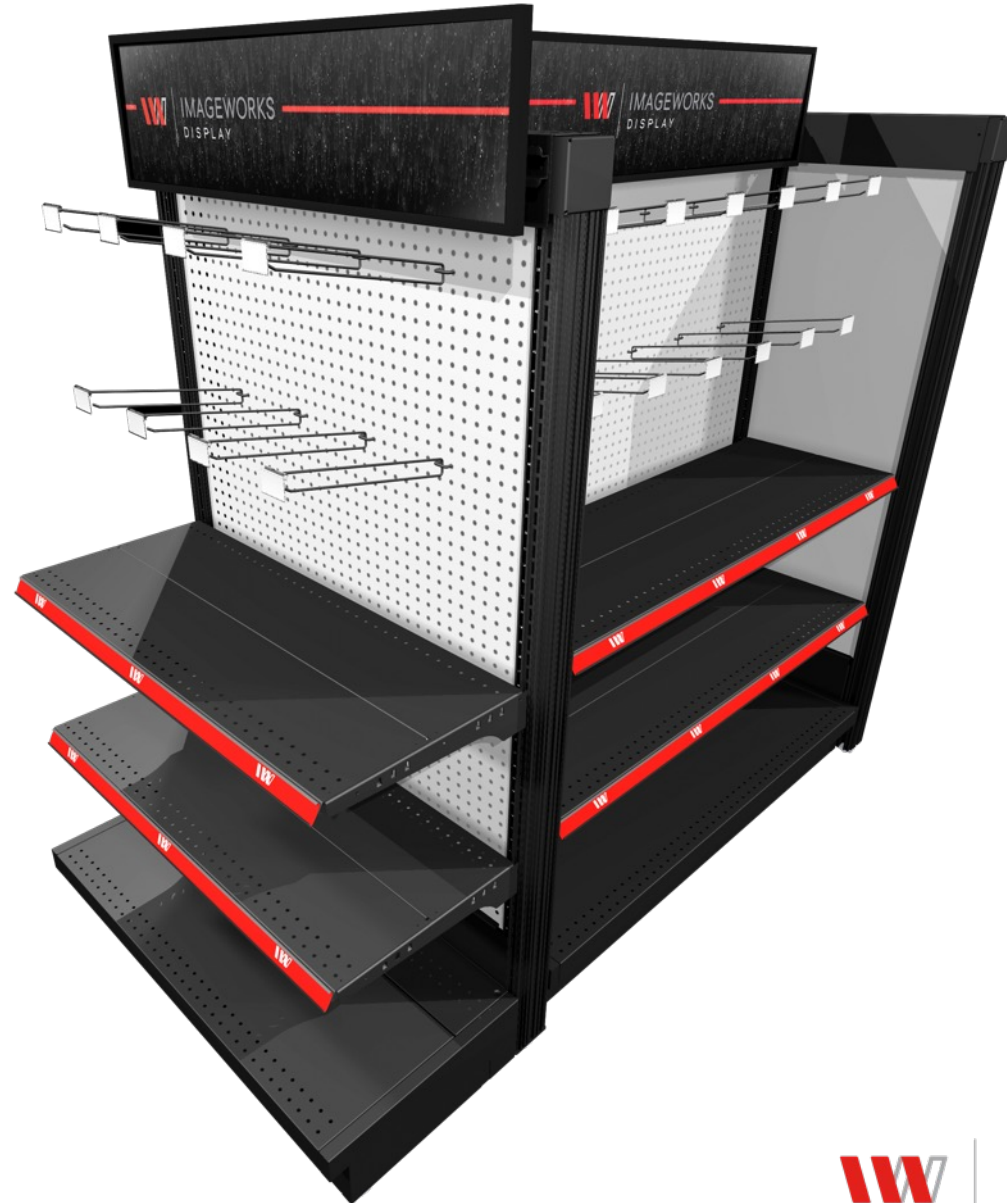
Patent # 11,737,586

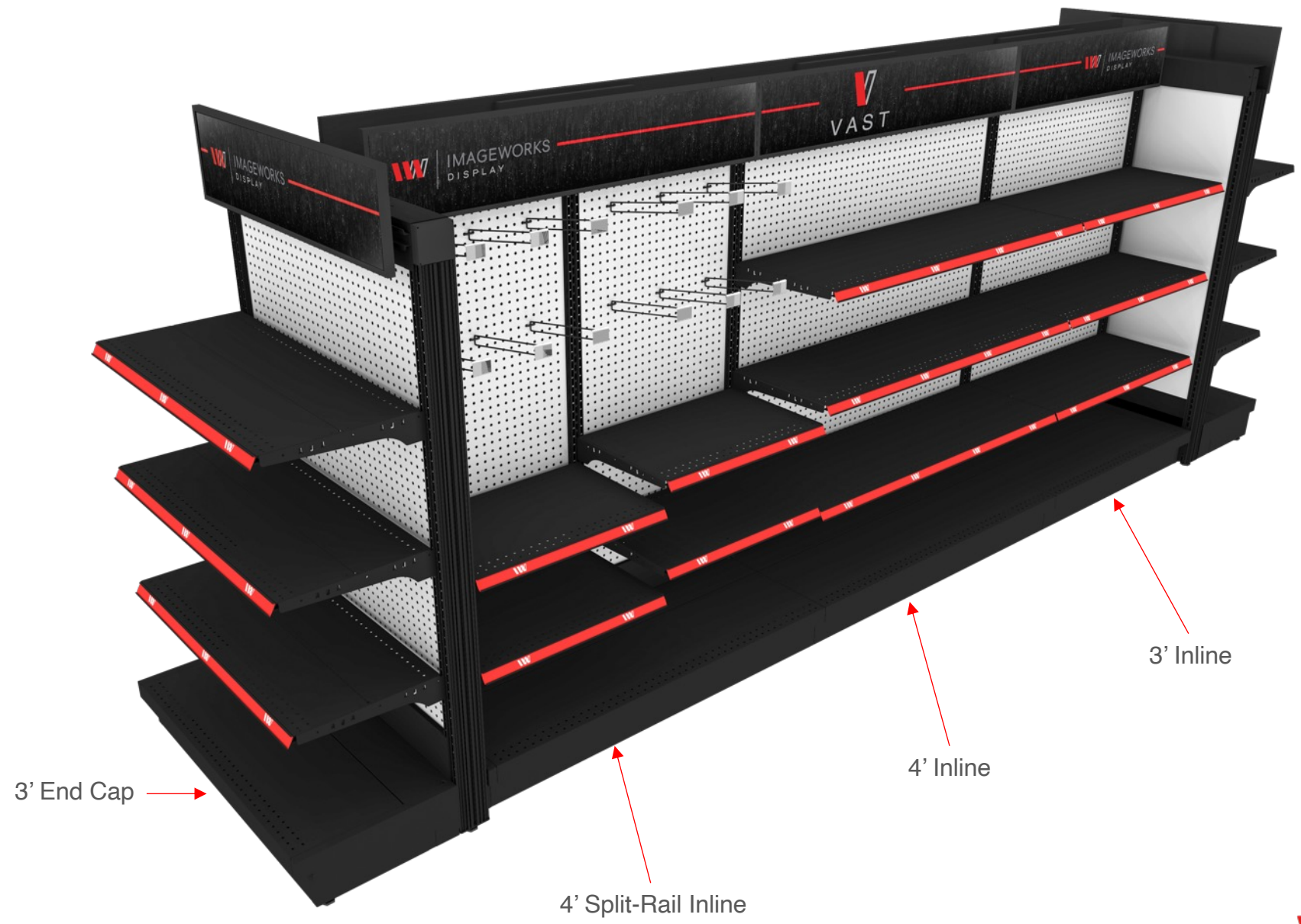
Integrated Power

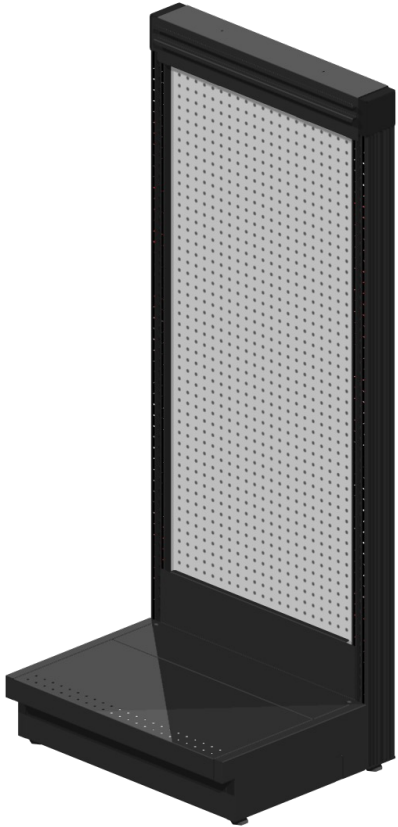
Accepts LED & Digital Signage

Easy Planogramming

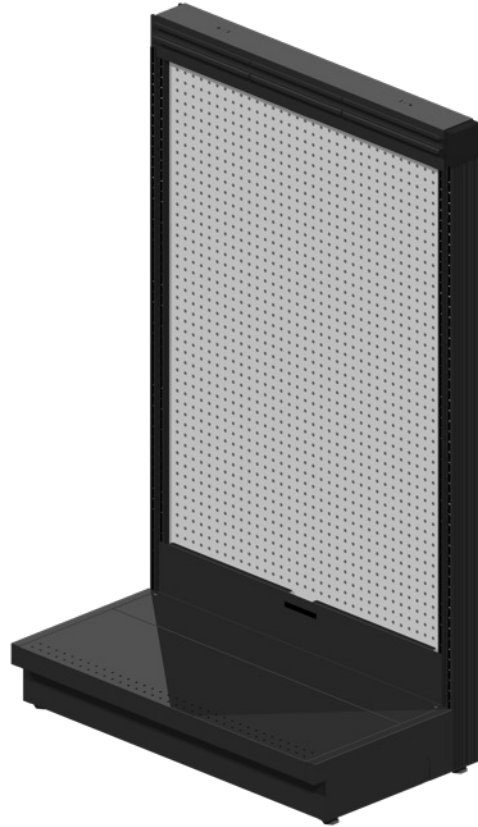
Accepts Existing Shelving



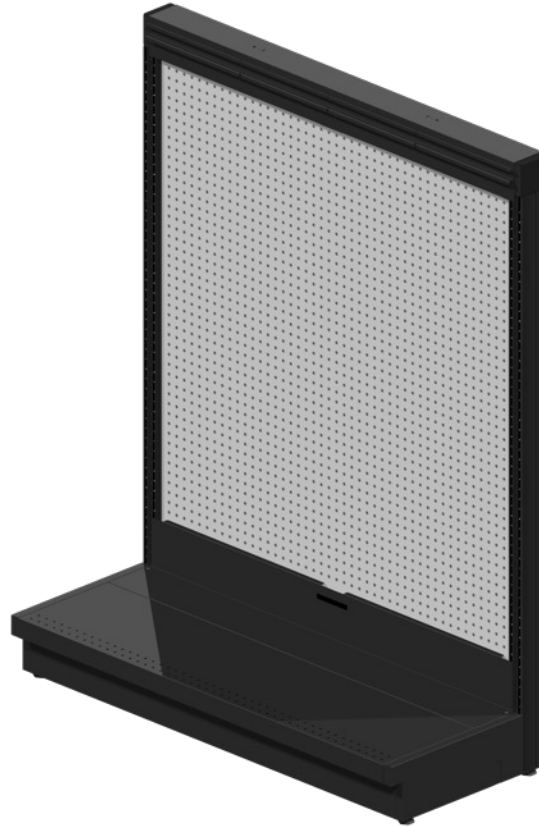




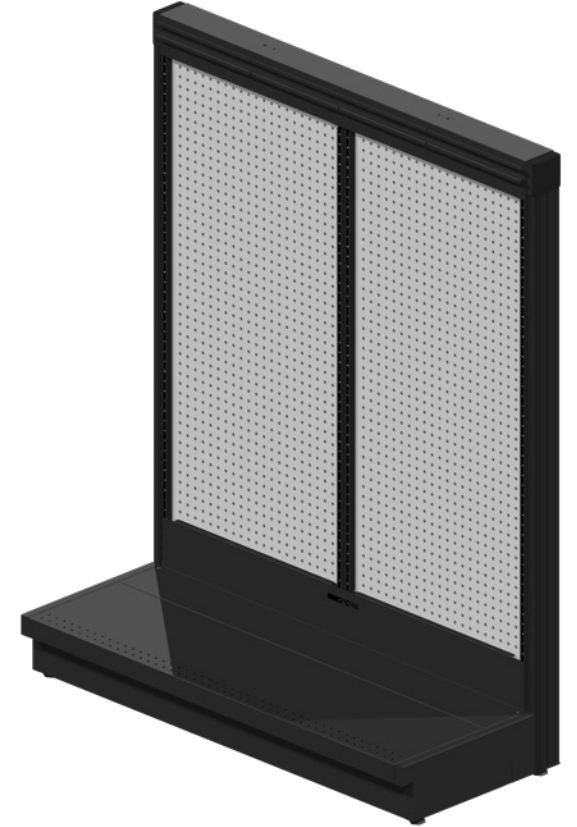
2' Section  
26" W x 20.75"D x 62"H



3' Section  
38" W x 20.75"D x 62"H



4' Section  
50"W x 20.75"D x 62"H

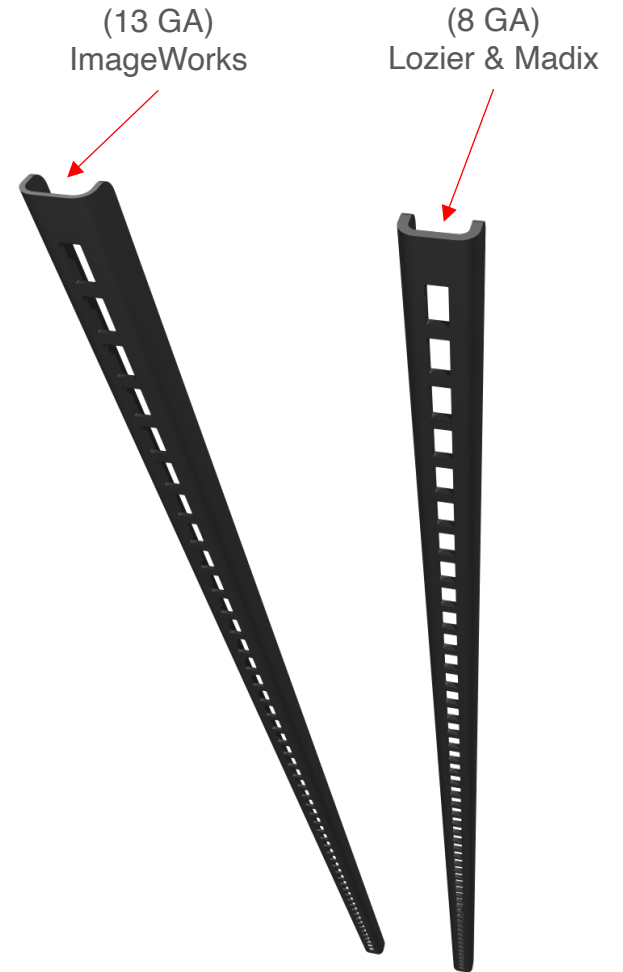
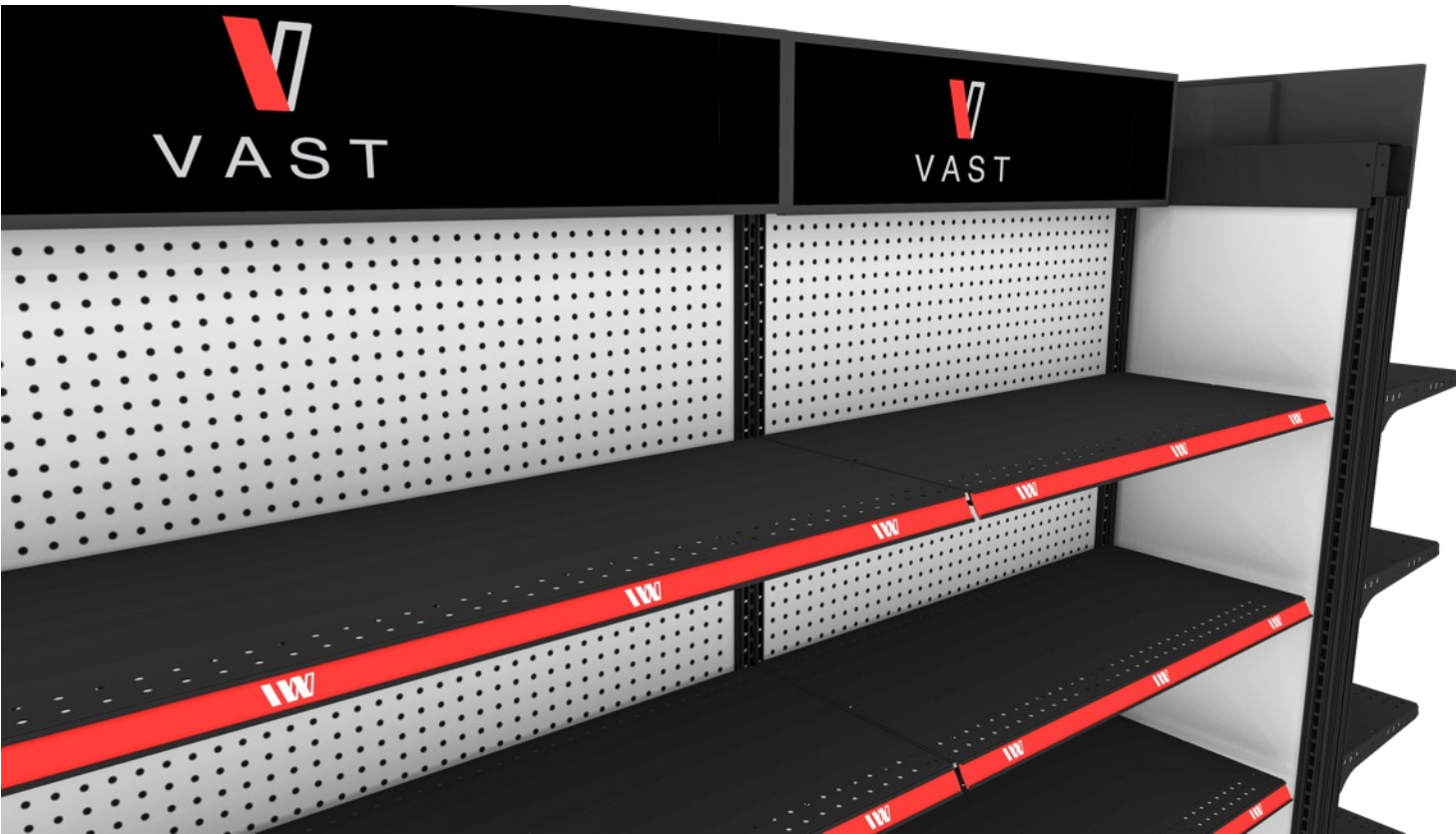


4' Split-Rail Section  
50"W x 20.75"D x 62"H



Versatile • Advanced • Scalable • Technology

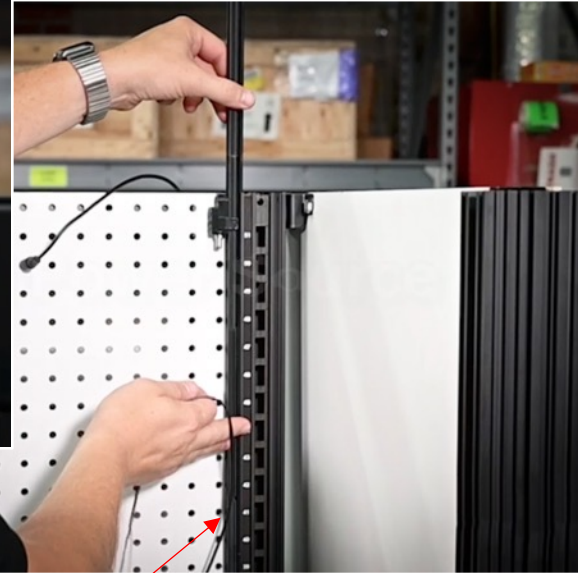
Patent # 11,737,586



Accepts other manufacturer shelving using the corresponding slotted shelf insert.



Lit Header With Cord Management



DC Electrical Power Tracks

### Integrated Power Management.

- Innovative upright design - channels power to entire display
- Provides power for lighting and other technologies

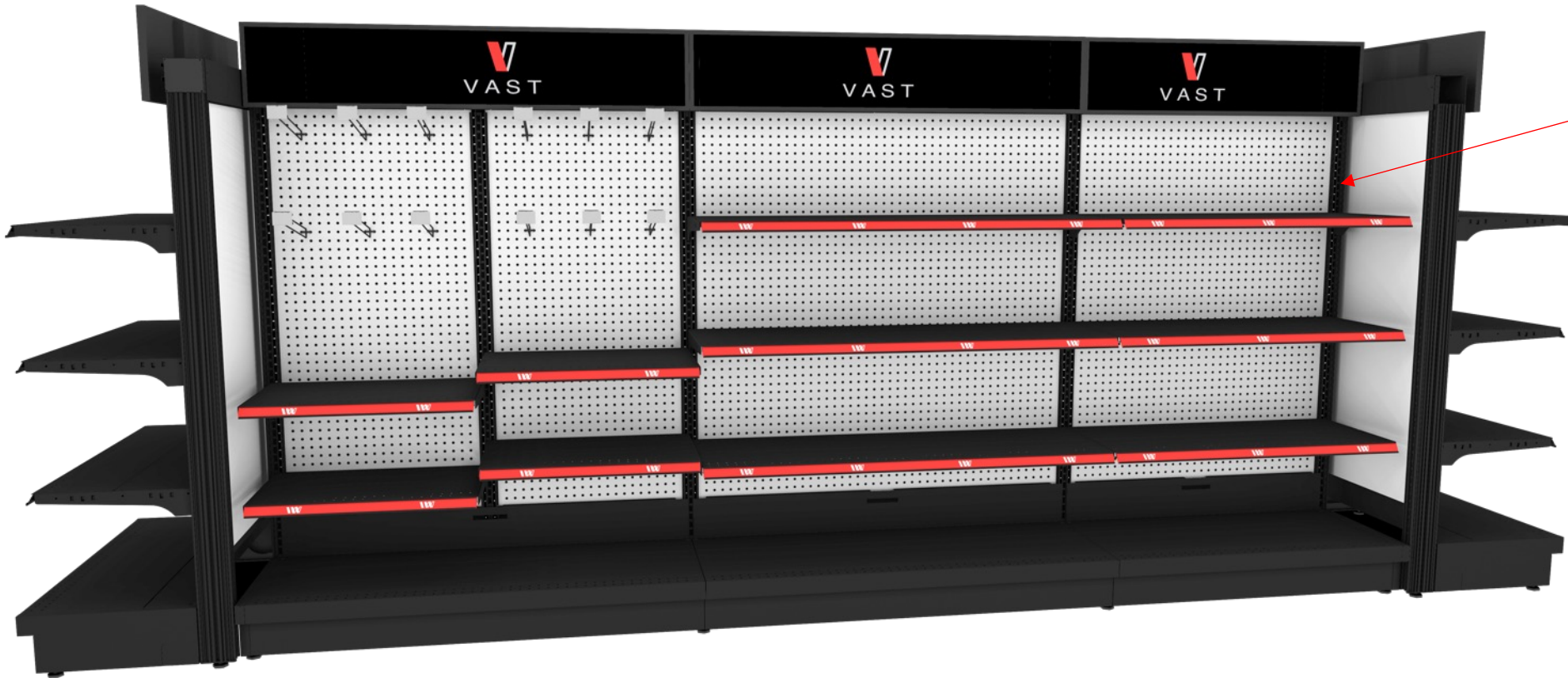


E-Tray Power Management



Versatile • Advanced • Scalable • Technology

Patent # 11,737,586



### Shelf Marker / Height Guide

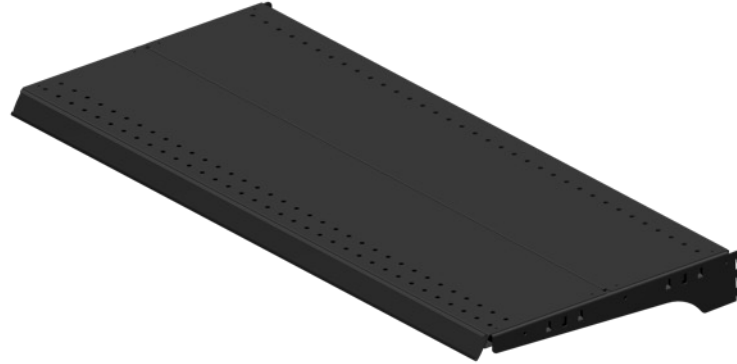
- Provides visual reference for easy POG resets



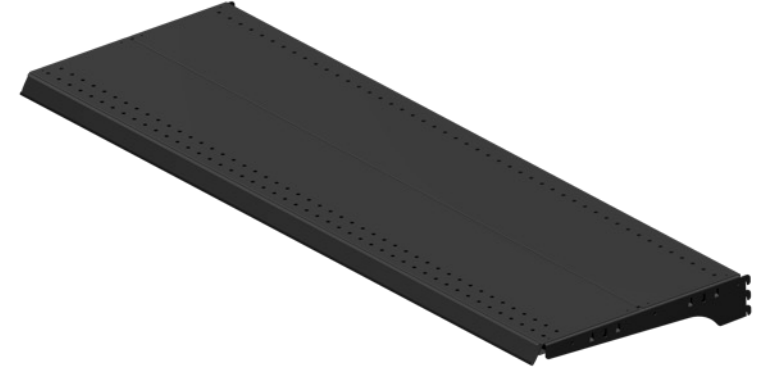
## Solid Shelf Options



2' Solid Shelf: 24"W x 16"D  
Shelf Rating: 85 lbs.

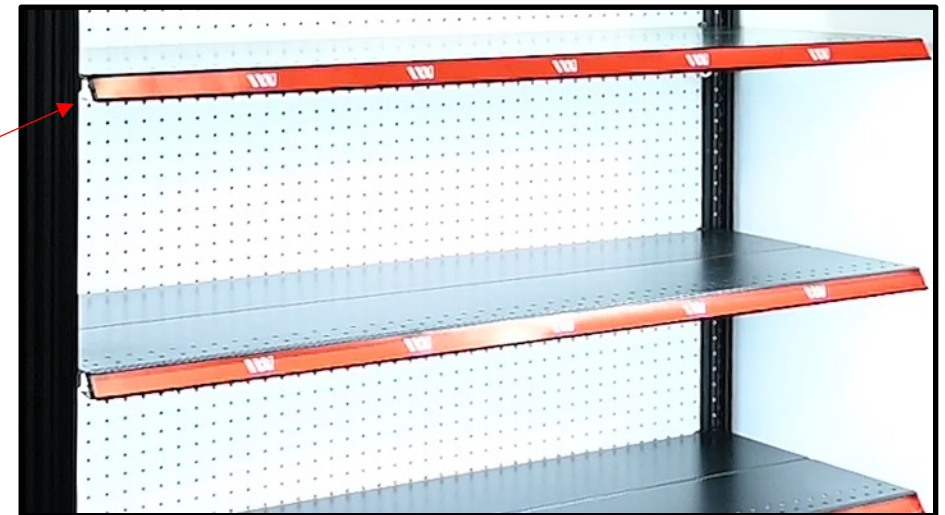


3' Solid Shelf: 36"W x 16"D  
Shelf Rating: 125 lbs.



4' Solid Shelf: 48"W x 16"D  
Shelf Rating: 175 lbs.

Illuminated LED  
Downlights Available.



➤ Shelving Interchangeable with ImageWorks *BEYOND* System

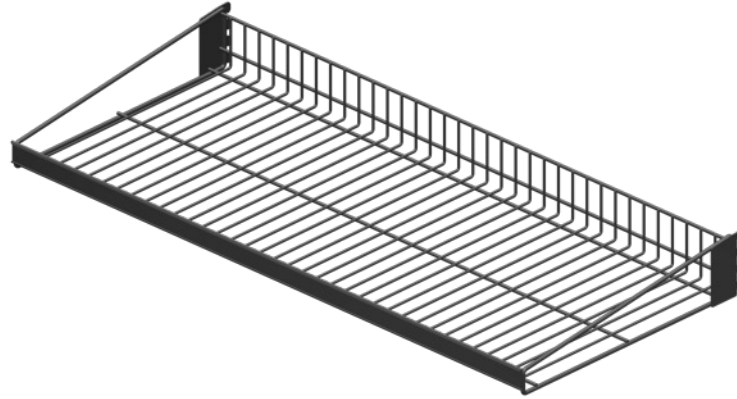




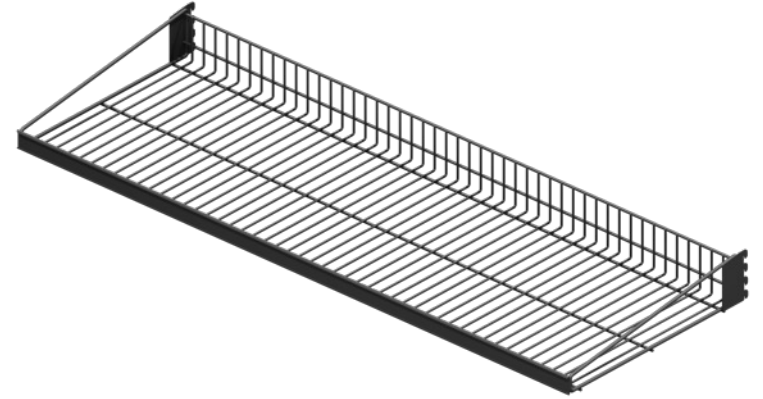
## Flat Wire Shelf Options



2' Flat Wire Shelf: 24"W x 16"D  
Shelf Rating: 75 lbs.



3' Flat Wire Shelf: 36"W x 16"D  
Shelf Rating: 115 lbs.

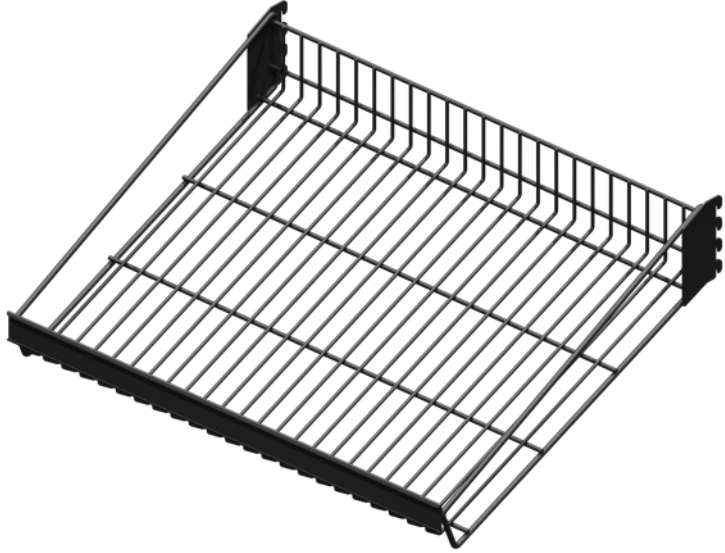


4' Flat Wire Shelf: 48"W x 16"D  
Shelf Rating: 150 lbs.

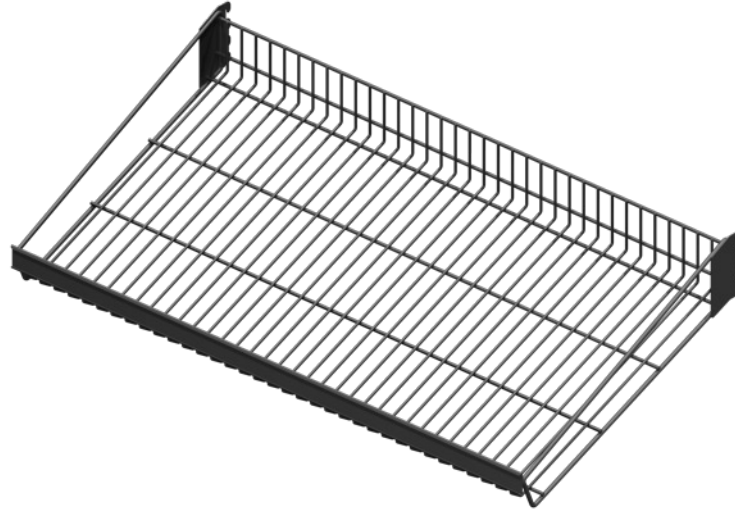
➤ Shelving Interchangeable with ImageWorks *BEYOND* System



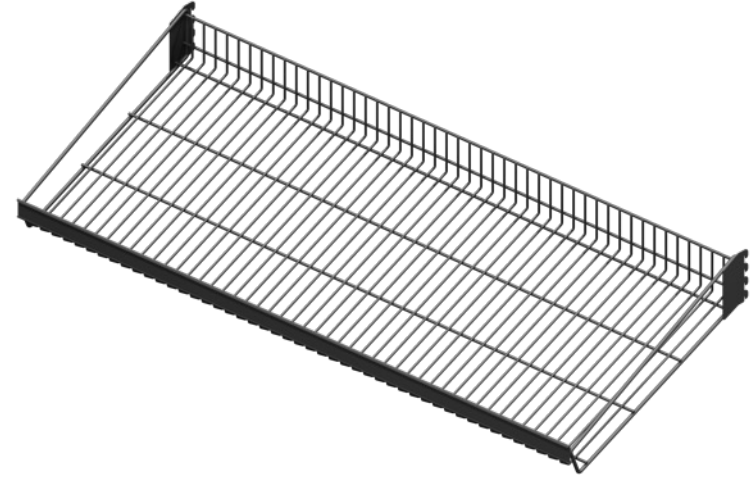
## Angled Wire Shelf Options



2' Angled Wire Shelf: 24"W x 16"D  
Shelf Angle 22.5°  
Shelf Rating: 75 lbs.



3' Angled Wire Shelf: 36"W x 16"D  
Shelf Angle 22.5°  
Shelf Rating: 115 lbs.

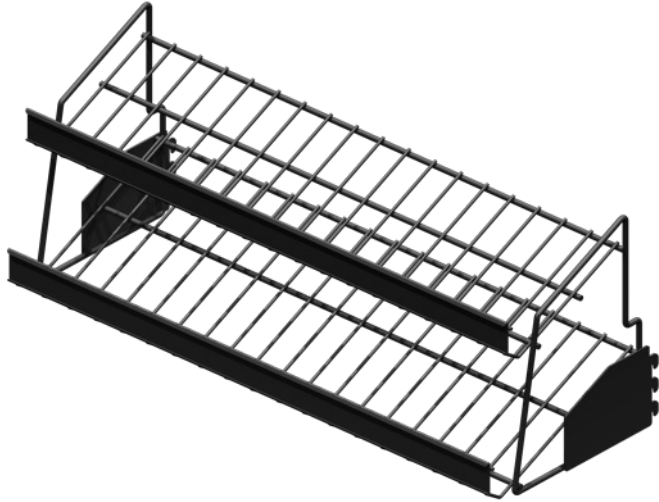


4' Angled Wire Shelf: 48"W x 16"D  
Shelf Angle 22.5°  
Shelf Rating: 150 lbs.

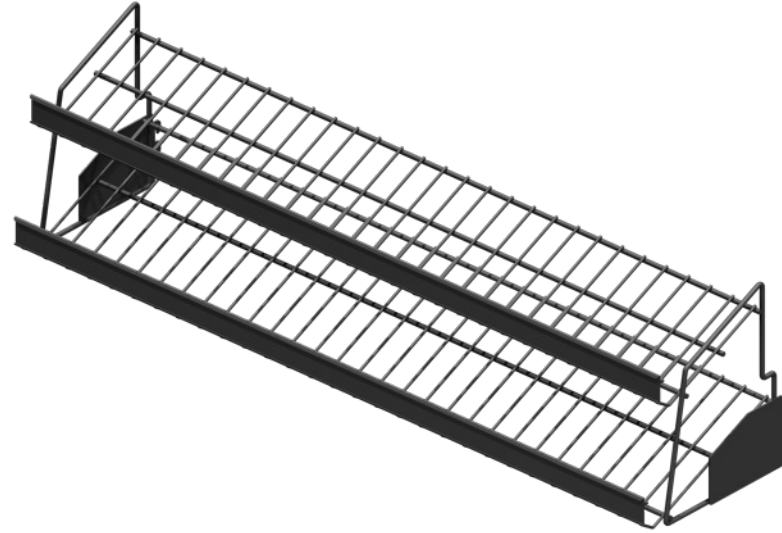
➤ Shelving Interchangeable with ImageWorks *BEYOND* System



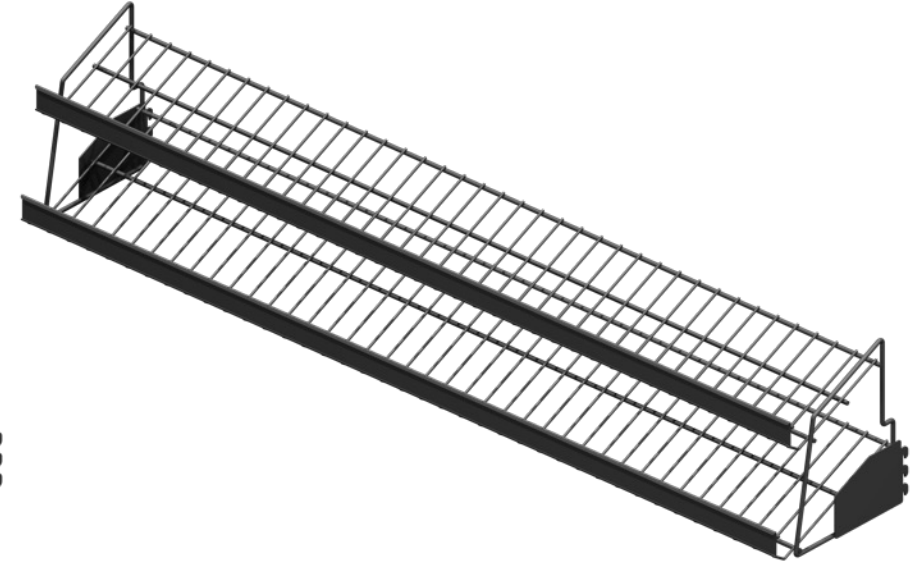
## Two-Tiered Angled Wire Shelving



2' Tiered Angled Shelf: 24"W x 9"D x 9.4"H  
Shelf Angle 25°



3' Tiered Angled Shelf: 36"W x 9"D x 9.4"H  
Shelf Angle 25°



4' Tiered Angled Shelf: 48"W x 9"D x 9.4"H  
Shelf Angle 25°

➤ Shelving Interchangeable with ImageWorks *BEYOND* System

### Peg Hook Options

6" Peg Hook



8" Peg Hook



11" Peg Hook





## Optional LED Signage

**2' LED Sign**  
Frame: 23" x 9"



➤ Features Dedicated LED Downlights

**3' LED Sign**  
Frame: 34" x 9"



**4' LED Sign**  
Frame: 46" x 9"





## Optional Digital Signage

### 2' Digital Sign

Frame: 21.50"W x 9" H  
Screen: 20.40"W x 8"H



### 3' Digital Sign

Frame: 36"W x 9"H  
Screen: 34.80"W x 8"H

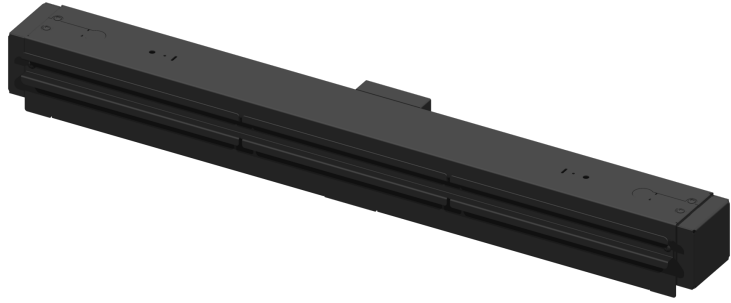


### 4' Digital Sign

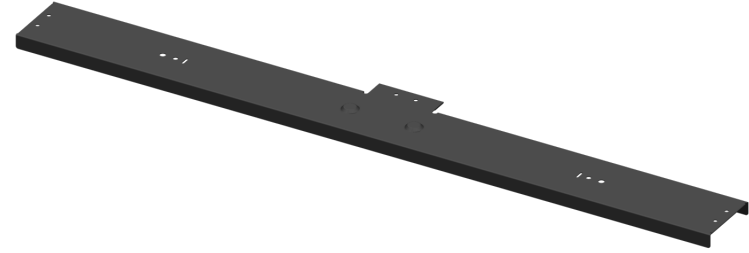
Frame: 43.40"W x 9"H  
Screen: 42.25"W x 8"H



➤ Digital Signage currently under development



T-Bar Top Cap  
Used for Power Management  
Used for Mounting LED & Digital Signage



3' Standard Top Cap  
Non-Lit / No Signage Option



IMAGEWORKS  
DISPLAY

We Put Excellence On Display!

[www.imageworksdisplay.com](http://www.imageworksdisplay.com)

800.704.3660