

Introducing...



Excellence on Display



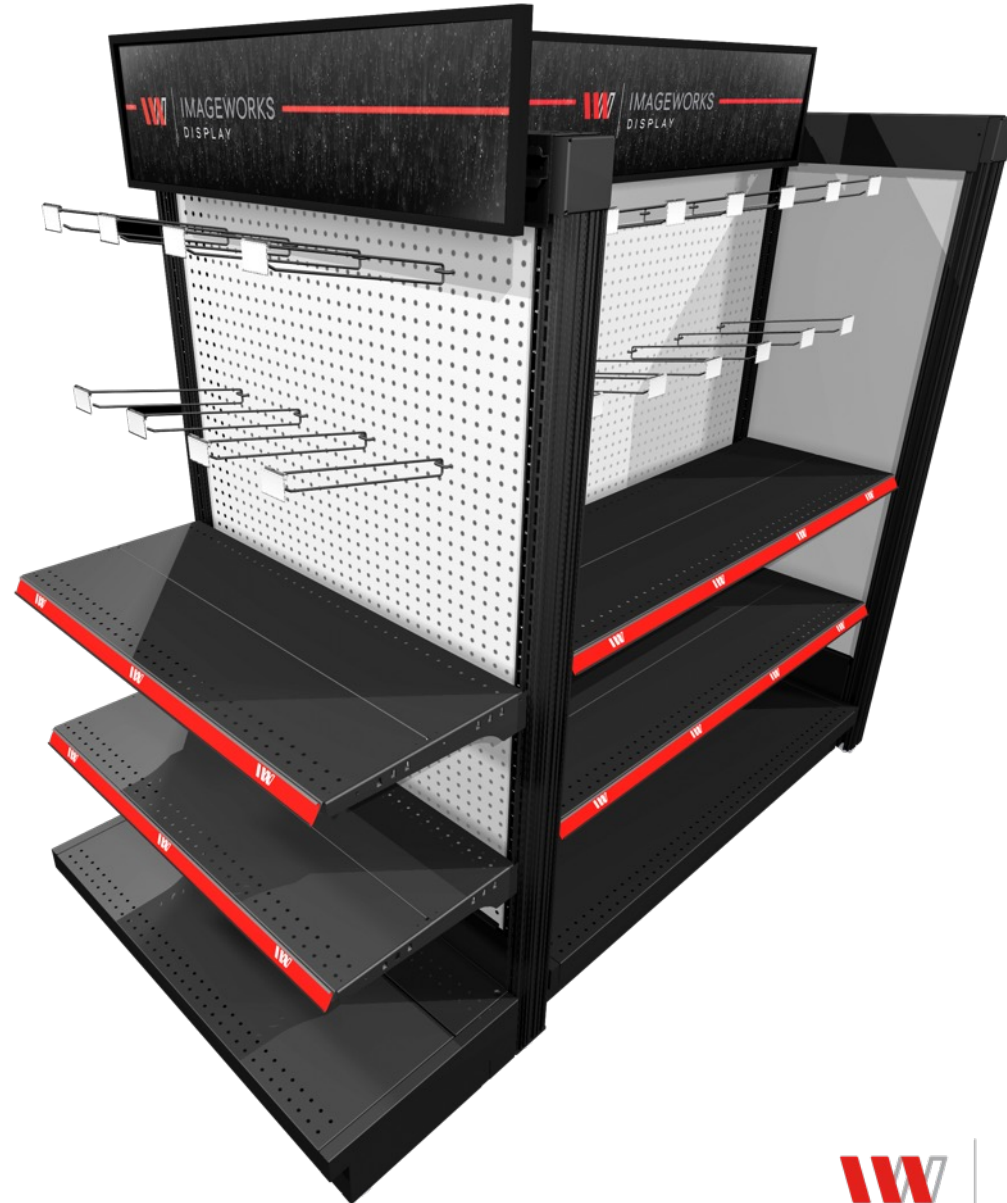
IMAGEWORKS
DISPLAY

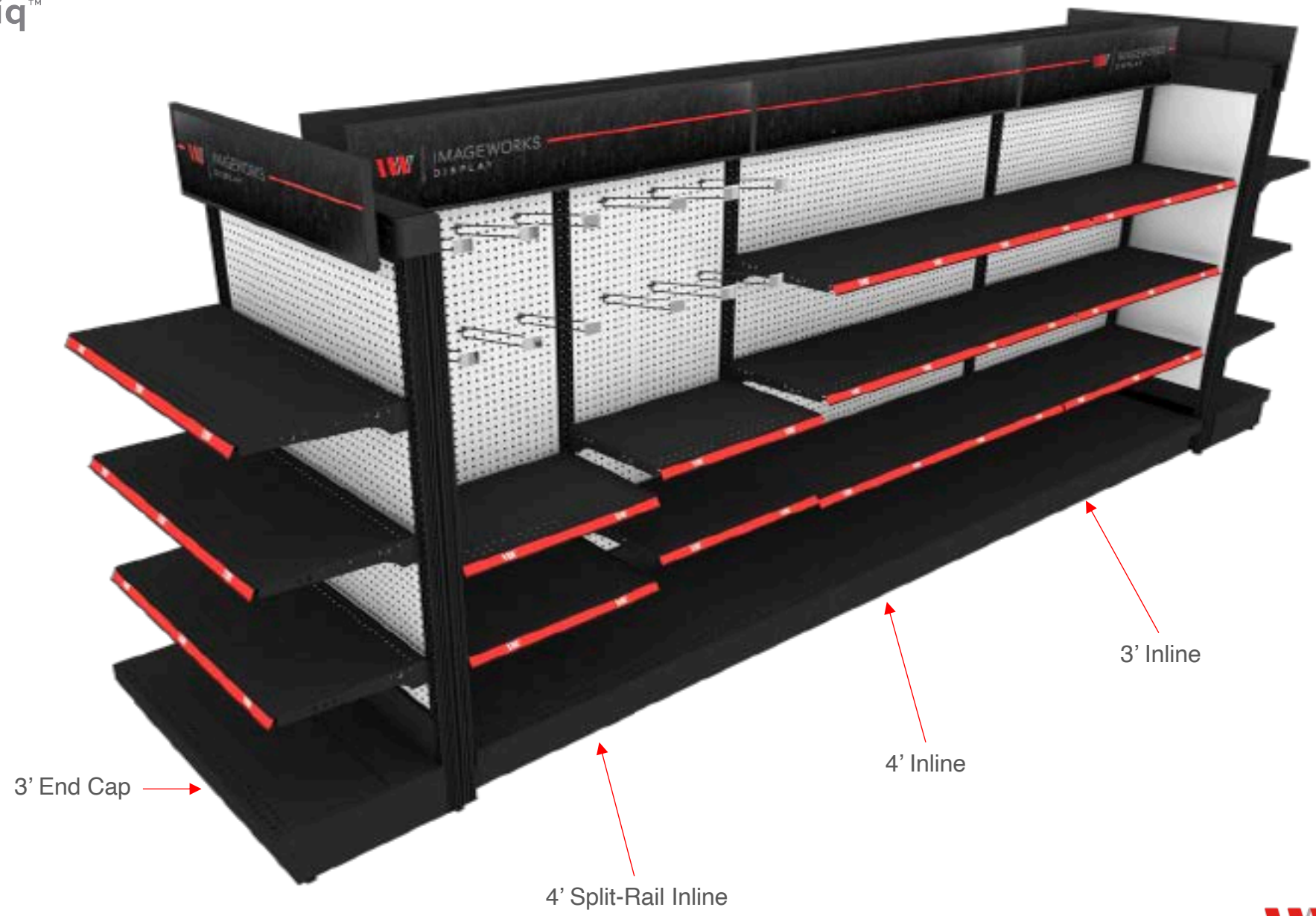
Integrated Power

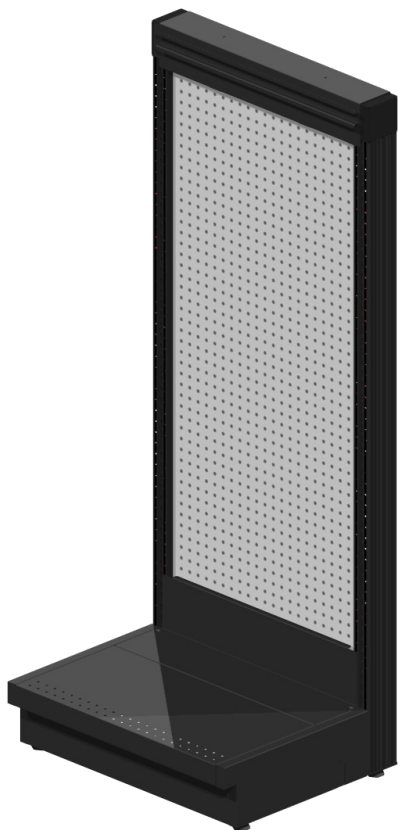
Accepts LED & Digital Signage

Easy Planogramming

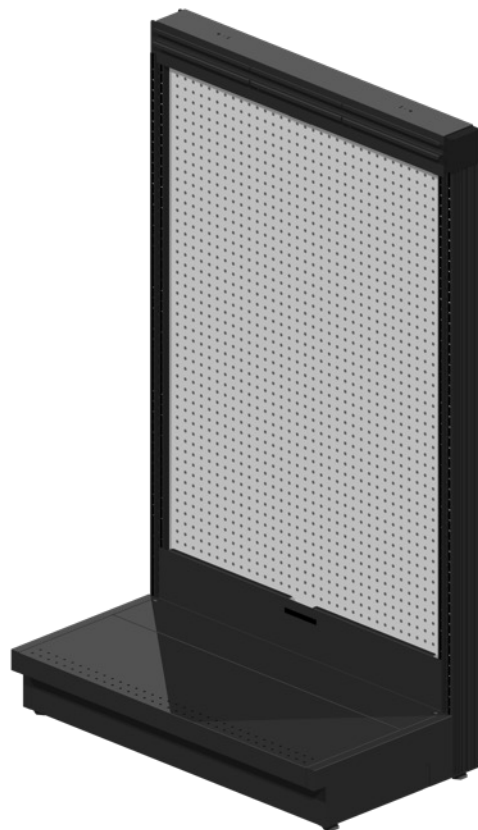
Accepts Existing Shelving



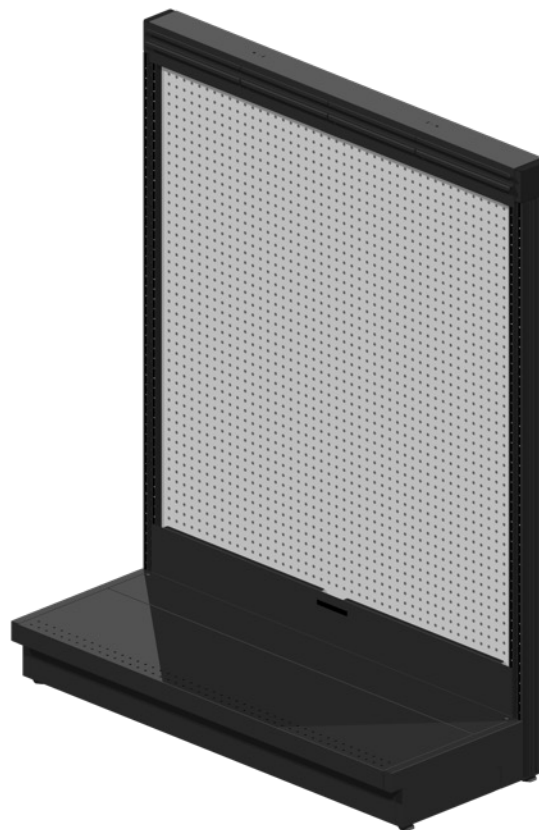




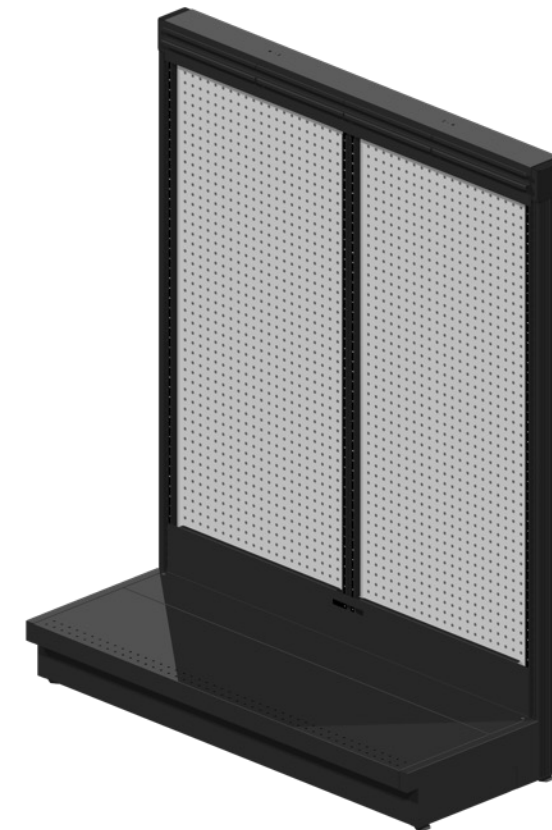
2' Section
26" W x 20.75"D x 62"H



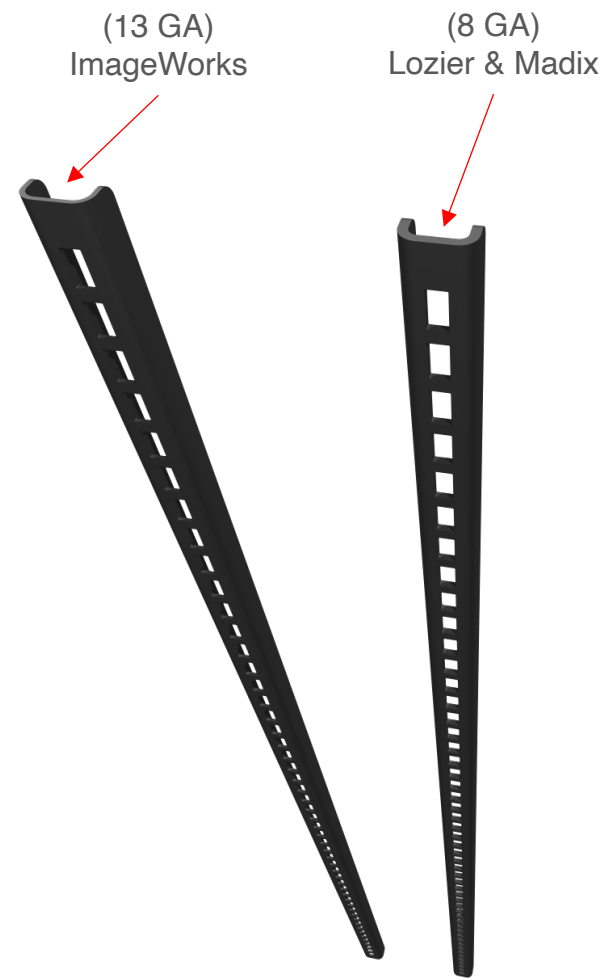
3' Section
38" W x 20.75"D x 62"H



4' Section
50"W x 20.75"D x 62"H



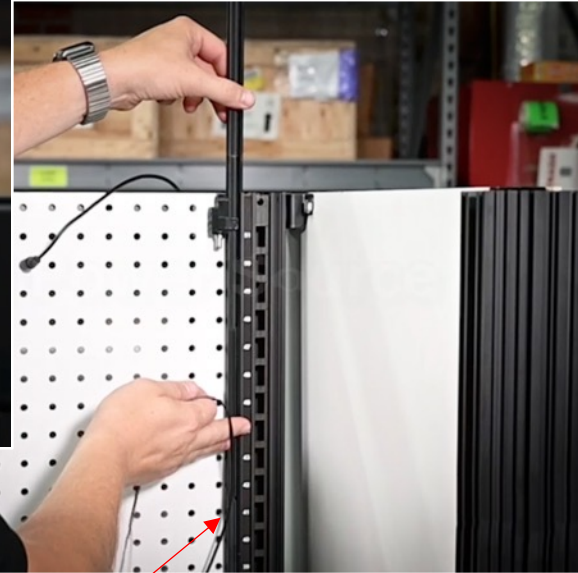
4' Split-Rail Section
50"W x 20.75"D x 62"H



Accepts other manufacturer shelving using the corresponding slotted shelf insert.



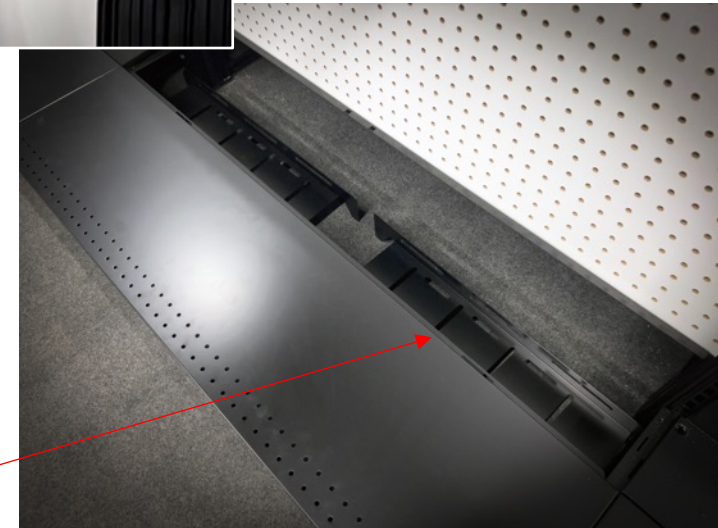
Lit Header With Cord Management



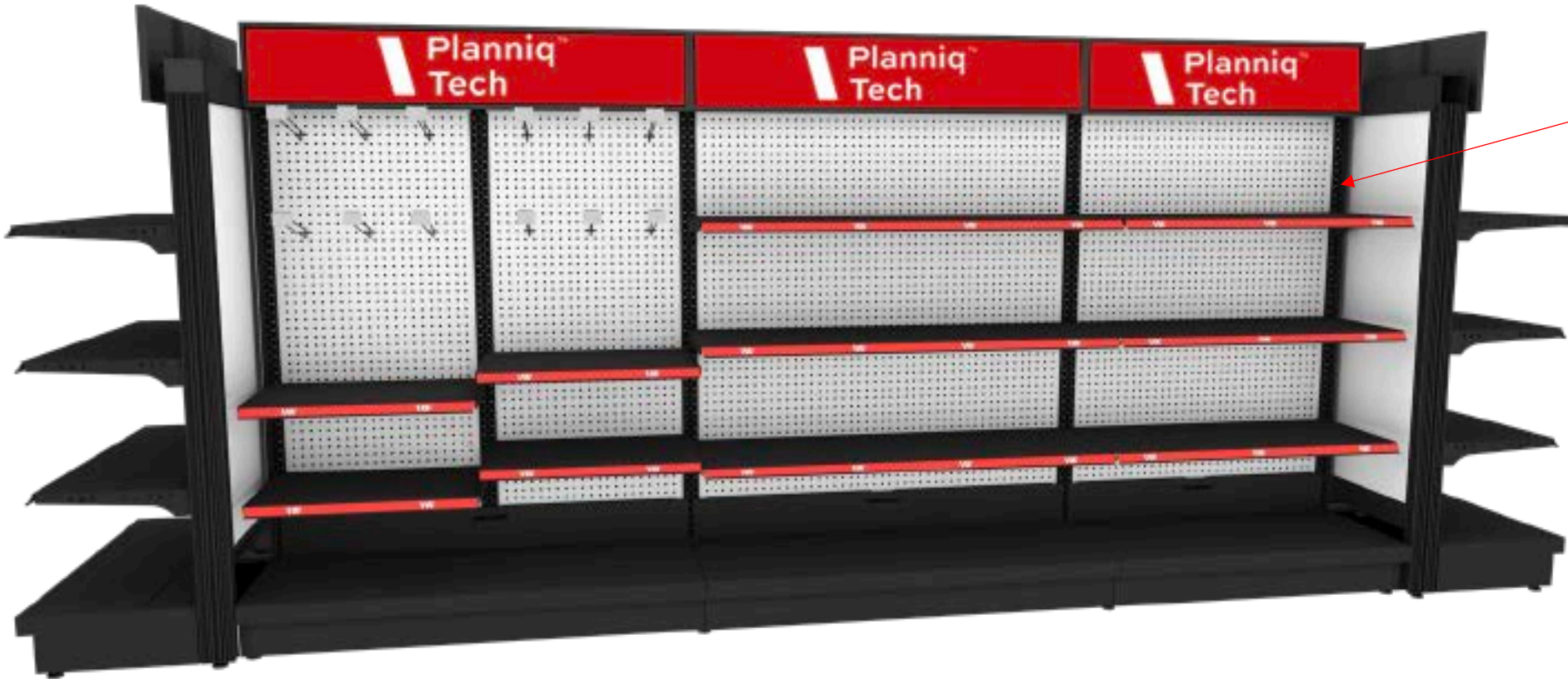
DC Electrical Power Tracks

Integrated Power Management.

- Innovative upright design - channels power to entire display
- Provides power for lighting and other technologies



E-Tray Power Management



Shelf Marker / Height Guide

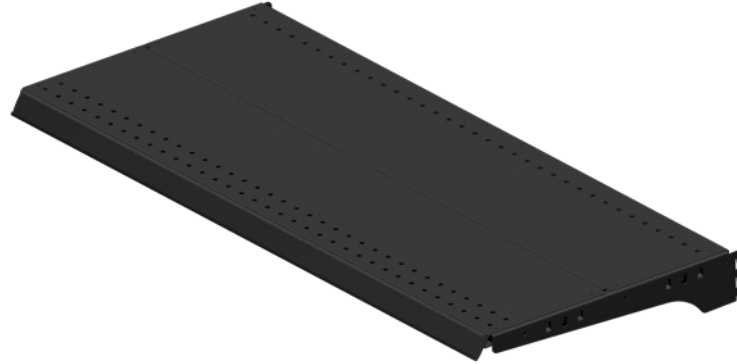
- Provides visual reference for easy POG resets



Solid Shelf Options



2' Solid Shelf: 24"W x 16"D
Shelf Rating: 85 lbs.

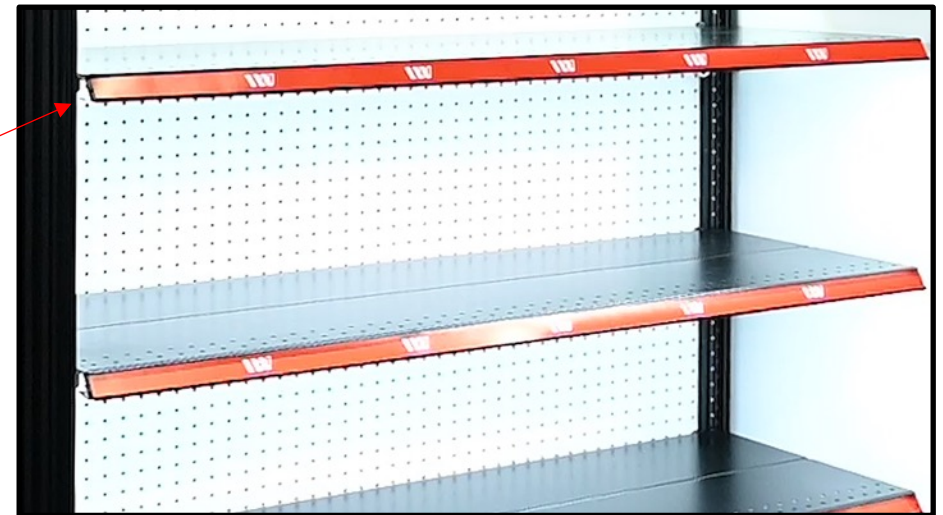


3' Solid Shelf: 36"W x 16"D
Shelf Rating: 125 lbs.



4' Solid Shelf: 48"W x 16"D
Shelf Rating: 175 lbs.

Illuminated LED
Downlights Available.

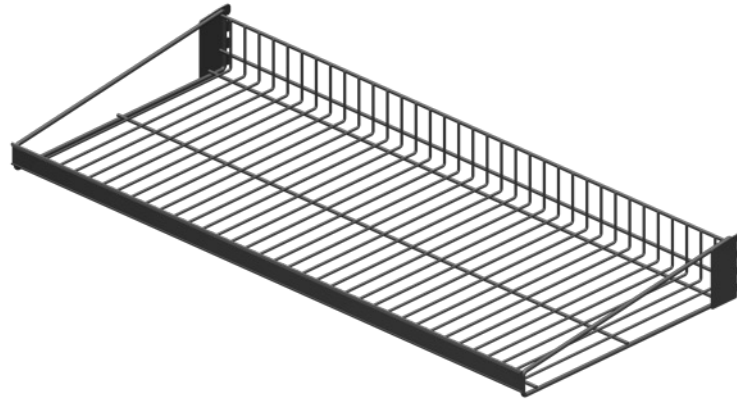


➤ Shelving Interchangeable with ImageWorks *BEYOND* System

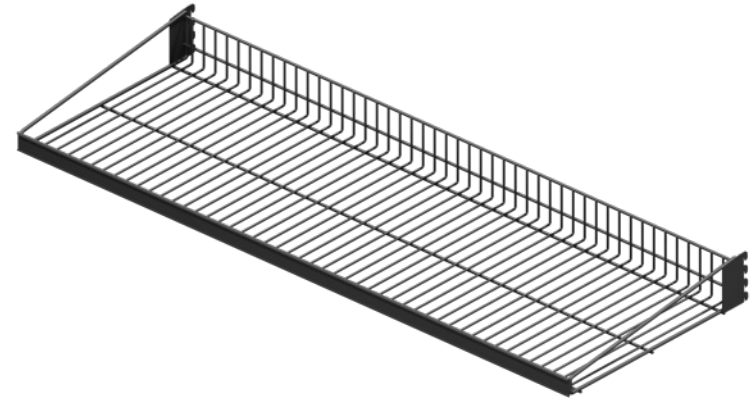
Flat Wire Shelf Options



2' Flat Wire Shelf: 24"W x 16"D
Shelf Rating: 75 lbs.



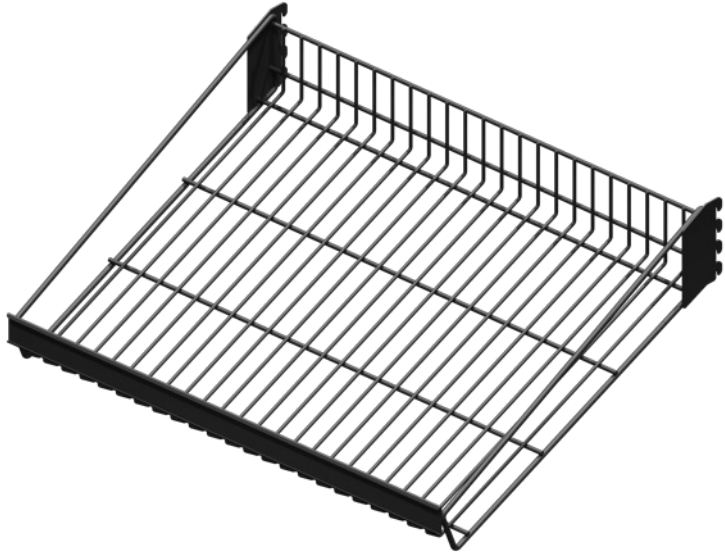
3' Flat Wire Shelf: 36"W x 16"D
Shelf Rating: 115 lbs.



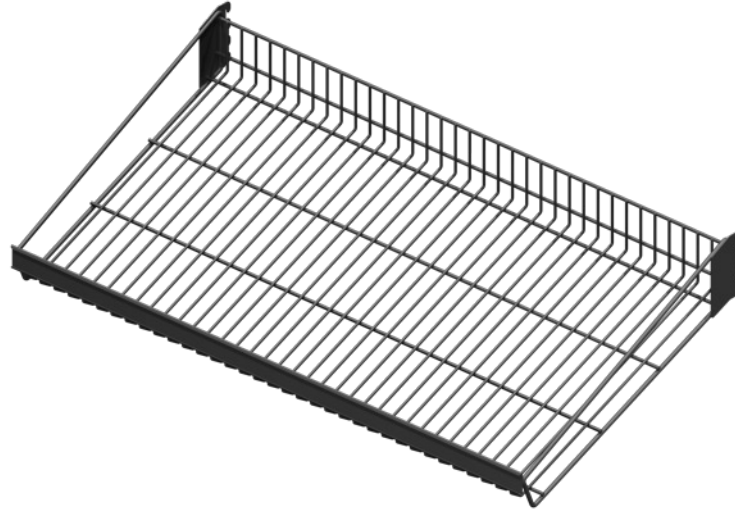
4' Flat Wire Shelf: 48"W x 16"D
Shelf Rating: 150 lbs.

➤ Shelving Interchangeable with ImageWorks *BEYOND* System

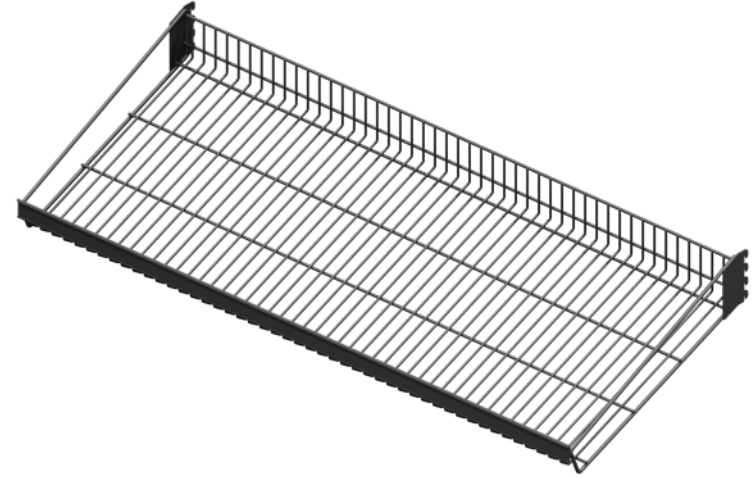
Angled Wire Shelf Options



2' Angled Wire Shelf: 24"W x 16"D
Shelf Angle 22.5°
Shelf Rating: 75 lbs.



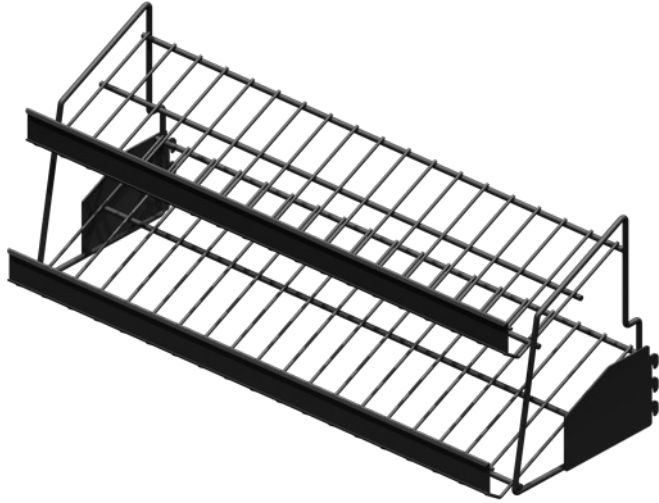
3' Angled Wire Shelf: 36"W x 16"D
Shelf Angle 22.5°
Shelf Rating: 115 lbs.



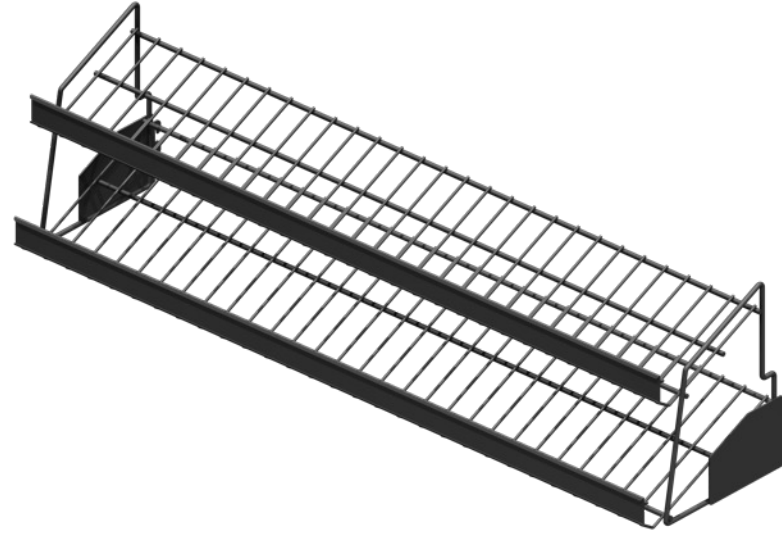
4' Angled Wire Shelf: 48"W x 16"D
Shelf Angle 22.5°
Shelf Rating: 150 lbs.

➤ Shelving Interchangeable with ImageWorks *BEYOND* System

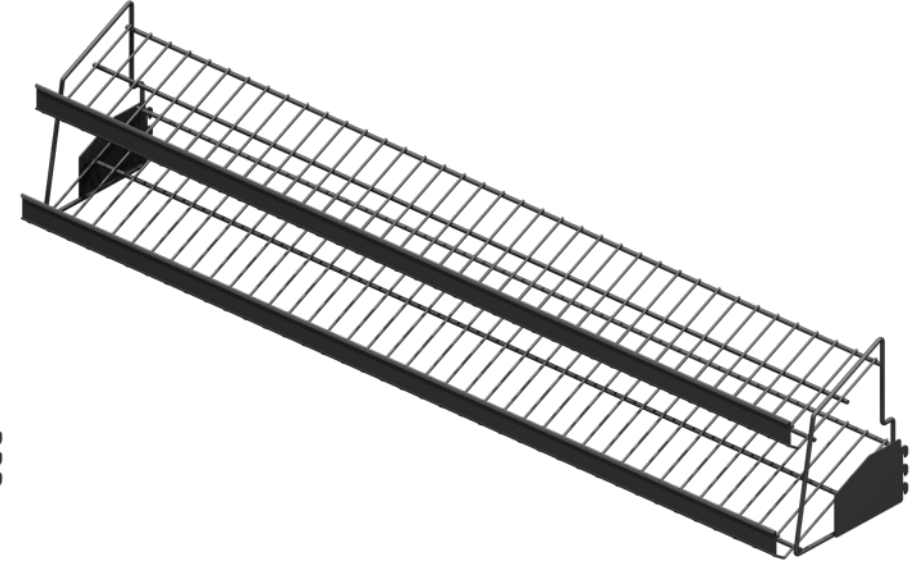
Two-Tiered Angled Wire Shelving



2' Tiered Angled Shelf: 24"W x 9"D x 9.4"H
Shelf Angle 25°



3' Tiered Angled Shelf: 36"W x 9"D x 9.4"H
Shelf Angle 25°



4' Tiered Angled Shelf: 48"W x 9"D x 9.4"H
Shelf Angle 25°

➤ Shelving Interchangeable with ImageWorks *BEYOND* System

Peg Hook Options

6" Peg Hook



8" Peg Hook



11" Peg Hook



Optional LED Signage

2' LED Sign
Frame: 23" x 9"



➤ Features Dedicated LED Downlights

3' LED Sign
Frame: 34" x 9"



4' LED Sign
Frame: 46" x 9"



Optional Digital Signage

2' Digital Sign

Frame: 21.50"W x 9" H

Screen: 20.40"W x 8"H



3' Digital Sign

Frame: 36"W x 9"H

Screen: 34.80"W x 8"H



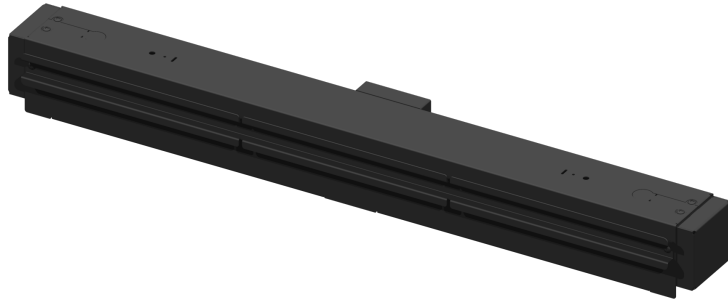
4' Digital Sign

Frame: 43.40"W x 9"H

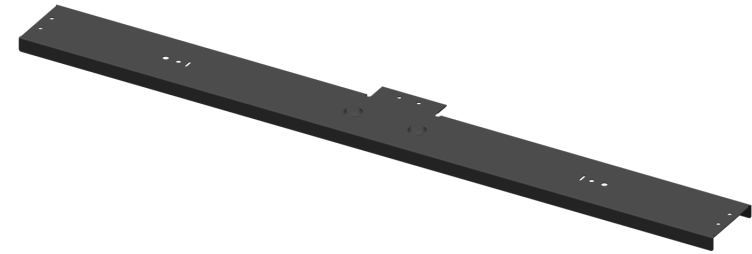
Screen: 42.25"W x 8"H



➤ Digital Signage currently under development



T-Bar Top Cap
Used for Power Management
Used for Mounting LED & Digital Signage



3' Standard Top Cap
Non-Lit / No Signage Option



IMAGEWORKS
DISPLAY

We Put Excellence On Display!

www.imageworksdisplay.com

800.704.3660